

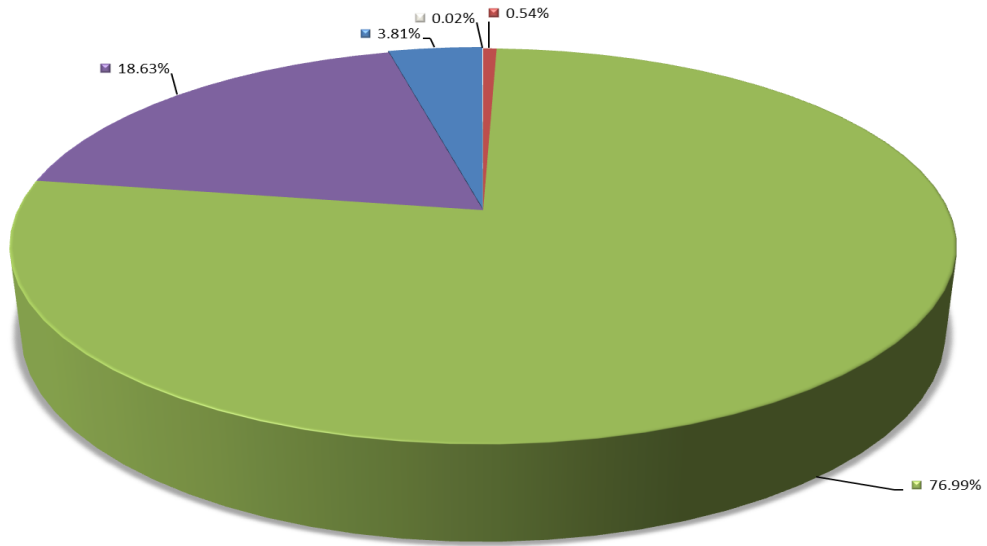
Data Source: ESR as at
31st December 2018

**North West Ambulance Service NHS Trust
Workforce Information
Calendar Year 2018**

Published March 2019

Data Source: ESR as at 31st December 2018

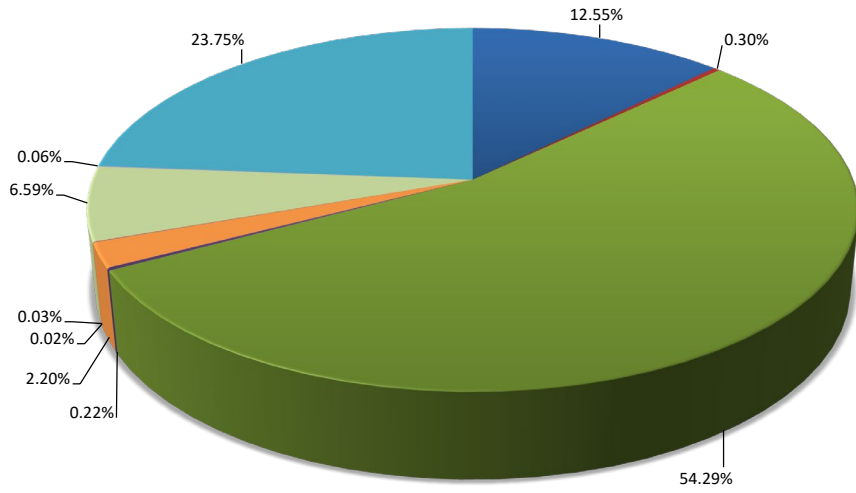
Current Staff: Sexual Orientation By %



■ Bisexual ■ Heterosexual or Straight ■ Not stated (person asked but declined to provide a response) ■ Gay or Lesbian ■ Other sexual orientation not listed

Data Source: ESR as at 31st December 2018

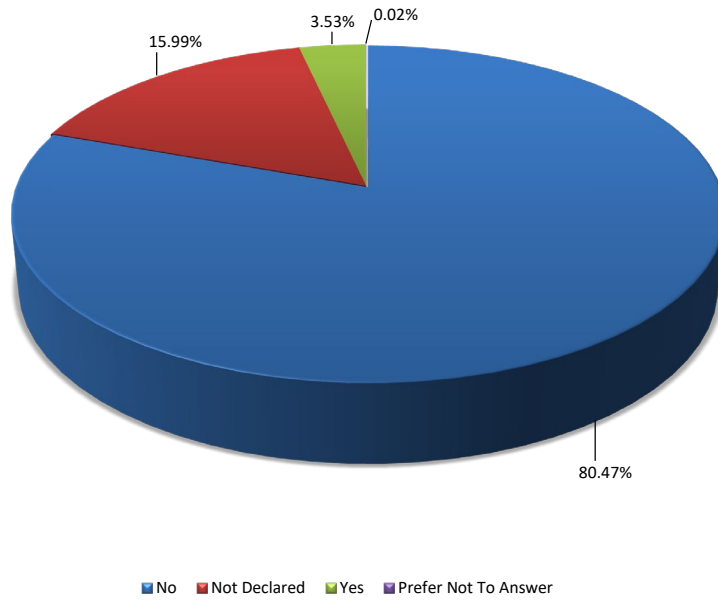
Current Staff: Religious Belief By %



■ Atheism ■ Buddhism ■ Christianity ■ Hinduism ■ Islam ■ Jainism ■ Judaism ■ Other ■ Sikhism ■ Un disclosed

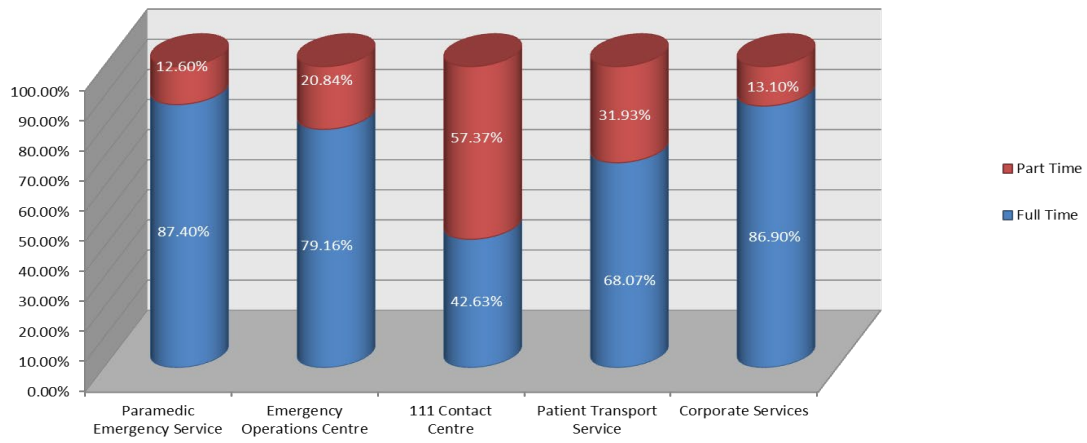
Data Source: ESR as at
31st December 2018

Current Staff: Disability By %



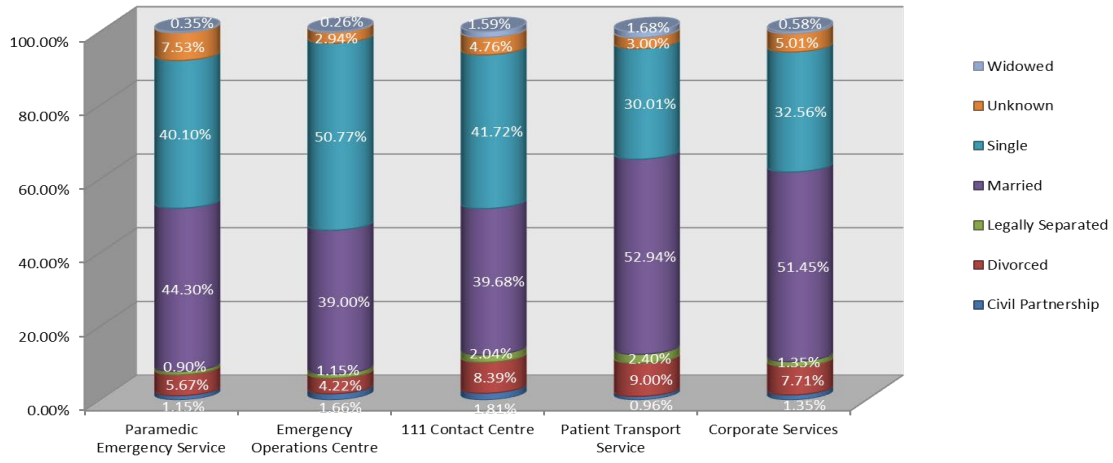
Data Source: ESR as at 31st December 2018

Current Staff: Part Time/Full Time By Service Lines



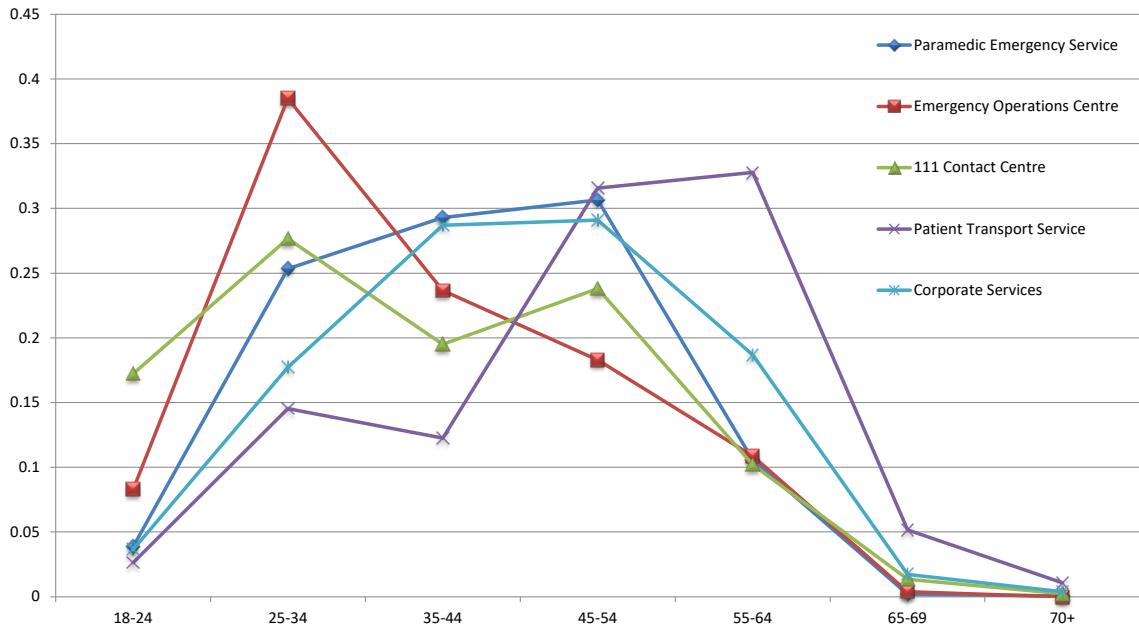
Data Source: ESR as at 31st December 2018

Current Staff: Martial Status By Service Lines



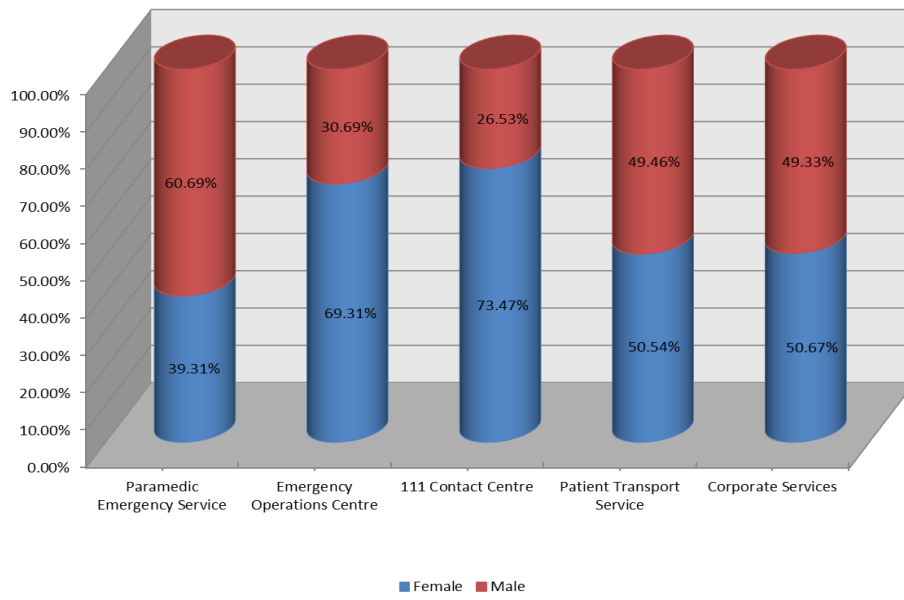
Data Source: ESR as at
31st December 2018

Current Staff: % Age By Service Lines



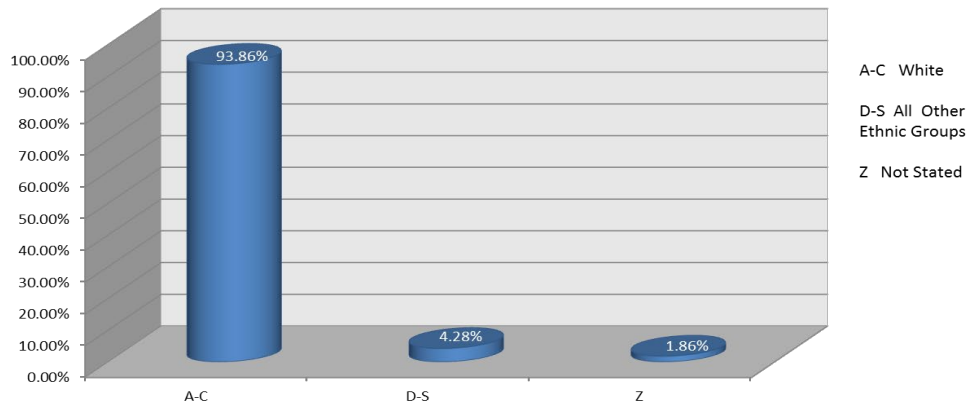
Data Source: ESR as at 31st December 2018

Current Staff: Gender By Service Lines



Data Source: ESR as at 31st December 2018

Current Staff: NWAS Ethnicity By Groups



Data Source: ESR as at 31st December 2018

Current Staff: NWAS Ethnicity Breakdown Groups D To S

